

MODEL CB-4

CHATTERBOX™

AUTOMATIC DIALING REMOTE MONITORING SYSTEM



*Remote monitoring solutions
for water treatment, distribution,
and wastewater collection/
treatment facilities.*

SINCE 1948

RACO®

REMOTE ALARMS AND CONTROLS

FEATURES

- Monitors 4 channels plus internal AC power
- Synthesized voice messages
- Automatic alarm calling
- Remote status inquiry from any telephone
- Low cost
- All solid state electronics
- Rugged design
- Simple to program
- Expandable
- Two years parts and labor warranty



MODEL CB-4

CHATTERBOX™

AUTOMATIC DIALING REMOTE MONITORING SYSTEM

CHATTERBOX CB-4 keeps you in direct touch with your distant facility—as easily and simply as picking up a telephone. This field proven, 4th generation CHATTERBOX uses state-of-the-art technology. The CB-4 is carefully built for rugged, reliable service, with all the right performance and features to handle your most demanding applications.

IT CALLS YOU

Located at your remote facility and plugged into a standard telephone line jack (or optional radio link), the CB-4 continuously monitors the inputs connected to the system. If an alarm condition occurs, it dials up to 8 field-programmable phone numbers and identifies the specific problem in plain English.

YOU CALL IT

Call it from any telephone at any time to hear a complete status report. Either way, you keep in simple direct touch with your remote or unattended facility.

WHAT'S REALLY SO SPECIAL ABOUT THE CB-4?

Rugged Design. A must for real-world reliability. The CB-4 uses conservative component selection, sealed positive action switches, solid state and gas tube surge protection on every power, phone, and input line, all protected in a durable metal enclosure. You get quality from the ground up!

Ease of Programming. The voice guides you. All you need to do is enter up to 8 dial-out phone numbers. All other operating parameters (alarm criteria, alarm and normal messages, alarm trip delay, etc.) are preprogrammed, but may be altered from their default values to meet your needs. NOVRAM (nonvolatile memory) keeps your programming intact.

Simplicity. CB-4 is easy to use. All the Chatterbox needs is a standard telephone jack and 120 VAC. All you need is a telephone.

Modular Upgradability. The advanced modular design of the CB-4 lets you easily upgrade your

unit as your monitoring needs change. This gives you an effective hedge against obsolescence with a unit that's built to last.

TELEPHONE HOOKUP

The CB-4 can dial from one to eight phone numbers, each up to 16 digits in length. Phone numbers are entered via the system's keyboard. The system operates on a standard telephone line, with connection through an industry standard 4-pin modular jack. Standard pulse dialing or Touch Tone DTMF dialing is selectable at the keyboard, allowing CHATTERBOX to work with any telephone system and most paging systems.

SYNTHESIZED VOICE MESSAGE

Communication with called parties is via a highly intelligible solid state voice synthesizer (magnetic tape loop is not used). Station identification plus alarm and normal messages for each channel are programmable from a standard 230 word vocabulary.

ALARMS

When an alarm condition occurs, the CHATTERBOX automatically dials the preprogrammed telephone numbers and reports the station identification and specific alarm conditions that exist. Each channel can be independently programmed for alarm on open circuit, alarm on closed circuit, or no alarm (report on inquiry only). Alternatively to alarm monitoring, the elapsed time meter can be activated for any channel.

Acknowledgement of an alarm phone call is accomplished by pressing a button on the called phone while the alarm is being received or by calling the reporting unit after having received the call.

INQUIRY CALLS

Calls can be made directly to the unit at any time from any telephone, locally or long distance, for a complete status report of all variables being monitored, including inter-

nal power status. Further, by pressing a telephone key, the unit will report all user-entered programming and diagnostic counts. A built-in microphone permits a caller to listen to local sounds and to have a two-way conversation with personnel at the dialer site.

Front panel LED indicators, which show system operation, alarm status, and battery condition, provide system operation information at the site.

NOVRAM NONVOLATILE MEMORY

User-entered programming is kept intact for up to ten years, even when all power is removed from the unit.

EMERGENCY POWER

A rechargeable gel cell battery keeps the system operating in the event of a power failure. A precision regulated charger—superior to a "trickle" charger—is used to minimize charging time and maximize battery life.

MODULARLY EXPANDABLE

Expansion connectors are provided to easily install field upgrades for an additional analog input.

RUGGED CONSTRUCTION

The CHATTERBOX is built to last. An all solid state design, quality components, and a heavy-duty metal enclosure ensure a long life of service. All keyboard and front panel switches are sealed to prevent contamination by dust and moisture.

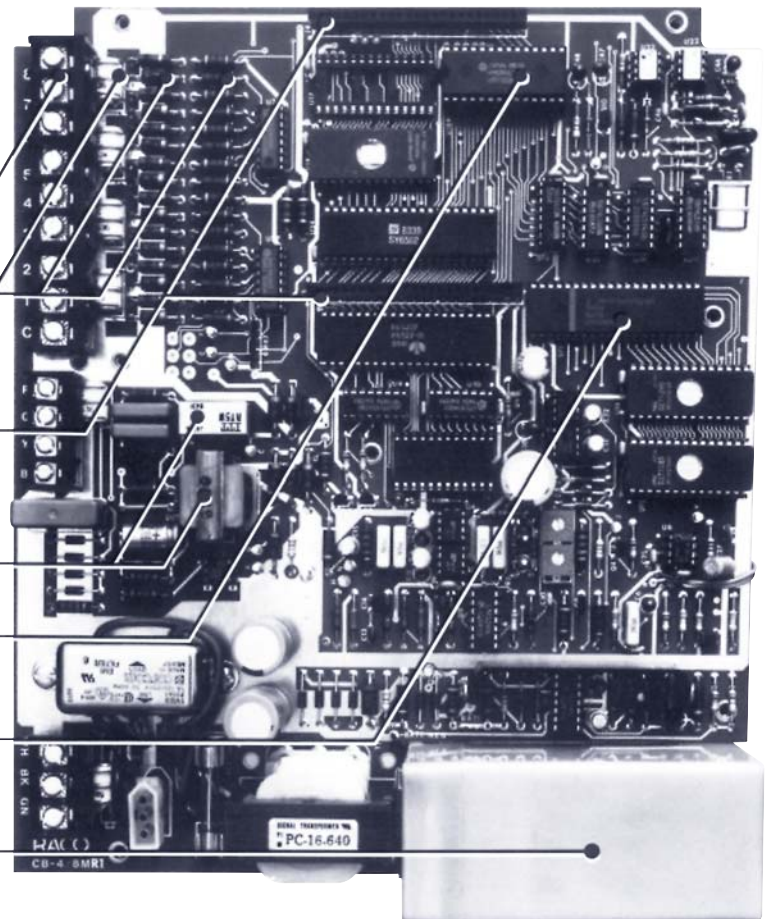
INTEGRAL SURGE PROTECTION

Gas tube and solid state surge protection is provided on all inputs, including power, phone, and signal lines. Protectors are integrated into the main circuit board for maximum protection.

REMOTE PROGRAMMING

From any telephone the operator can call the unit and program a wide variety of functions of the system.

- Sturdy screw-clamp terminal strips for easy installation,
- Superior surge protection on power, phone, and all alarm input lines keep your CHATTERBOX on the job!
- Expansion slots for optional plug-in modules give you flexibility and eliminate obsolescence.
- FCC approved phone line coupler.
- NOVRAM keeps your programming intact, even in extended power failures.
- Solid state speech synthesizer eliminates moving tape loop mechanisms.
- Gel cell battery with precision charger maintains operation during power failures.



FACTORY OPTIONS

Enclosure. System available in NEMA 4X enclosure, which is corrosion proof and sealed against 12 feet of water.

Channels. Four additional contact channels may be added.

Emergency Power. Battery operation extended from 6 to 24 hours.

Environmental. Thermostatically controlled heater available, suggested for operation below 20 degrees F or where condensation may occur.

Local Alarm Relay Output. Relay activates during unacknowledged alarm conditions.

MODULAR OPTIONS

Expanded Vocabulary. Standard vocabulary may be increased to 425 words.

Analog. Custom scaled in the units of measurement required for your job. Analog alarms on a high and a low alarm setpoint.

Cellular Telephone Interface. Enables transmission by cellular telephone instead of land based telephone lines.

Solar Powered Operation. Unit derives electrical power from solar charged battery system.

Standard Specifications:

ELECTRICAL

- Power requirement:** 105-135 VAC, 50/60 Hz, 15 watts maximum.
- Battery charging:** Precision voltage controlled, including automatic rapid recharge after drain.
- Battery backup:** 6 hours.
- Input sensing:** Four contacts standard, Open contacts see 5 volts DC: closed contacts see 10 ma DC.

PHYSICAL

- Surge protection:** Integral gas tube and solid-state protectors on all phone, power, and signal lines.
- Accommodates field-installed upgrades
- Rugged metal indoor enclosure.
- Weight:** 8 lbs (3.6 kg).
- Dimensions:** 11-5/8" H x 9-5/8" W x 3-3/4" D.
- Mounting centers:** 10-1/4 vertical x 8-1/4" horizontal.

ENVIRONMENTAL

- Temperature range:** 0 to 130°F
- Humidity:** 0 to 95%, noncondensing.

TELEPHONE

- Rotary pulse or tone dialing, keyboard selectable.
- Dials up to 8 different numbers, each up to 16 digits long.
- Allows programming of PBX delays in 1 second increments.
- FCC Registration #EMR539-14954-AL-R, "Ringer Equivalence": 0,3A.
- Alarm Acknowledgement is by Touch Tone® key or by calling back.
- Built-in microphone allows two-way conversation.

SPEECH MESSAGES

- Unit comes programmed with standard "alarm/normal" speech messages. Custom messages (including station ID) may be keyboard programmed from the 230 word internal vocabulary.

OPERATING PARAMETERS

- The following parameters may be programmed over a wide range on the keyboard: alarm trip delay, time between alarm calls, alarm reset time, telephone answer response time, alarm criteria (alarm on open contacts, alarm on closed contacts, or no alarm), run-time meters on/off, tone/pulse dialing, number of message repeats.

Specifications subject to change without notice.
Touch Tone is a registered trademark of AT&T.

***CHATTERBOX keeps you in direct touch with your distant facility—
as easily and simply as picking up a telephone!***



REMOTE ALARMS AND CONTROLS

RACO MANUFACTURING AND ENGINEERING CO.

1400-62nd Street • Emeryville, CA 94608
(510) 658-6713 • Fax: (510) 658-3153
1-800-722-6999
E-mail: sales@racoman.com
Web: www.racoman.com

Represented in
your area by: